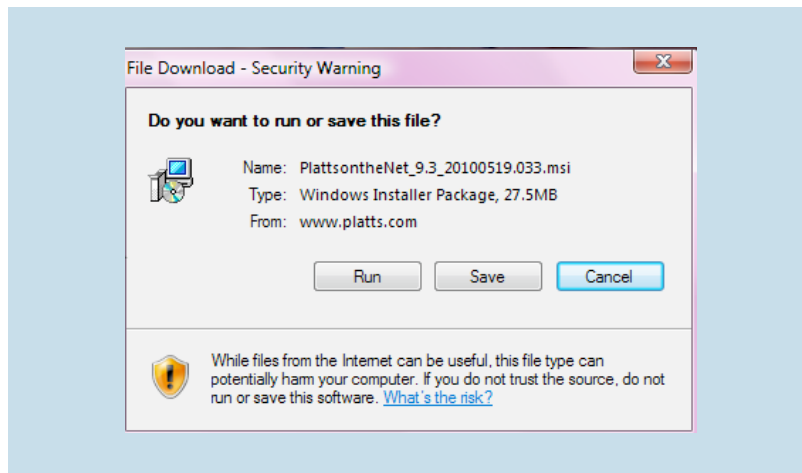


How to Download and Install Platts on the Net (POTN) Software

Welcome. Platts will provide you with an email containing a User Name, Domain, Password and software download location.

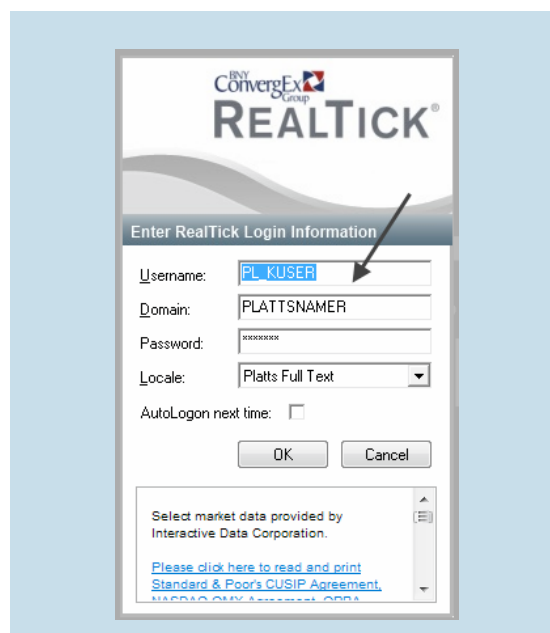
Download the Platts on the Net (POTN) software. Select Run. The only other question will be whether to use Custom or Complete. Select Complete.



After the download is complete, an icon will be placed on your desktop.



Platts will provide you with a User Name, Domain and Password. The Locale will be Platts Full Text.





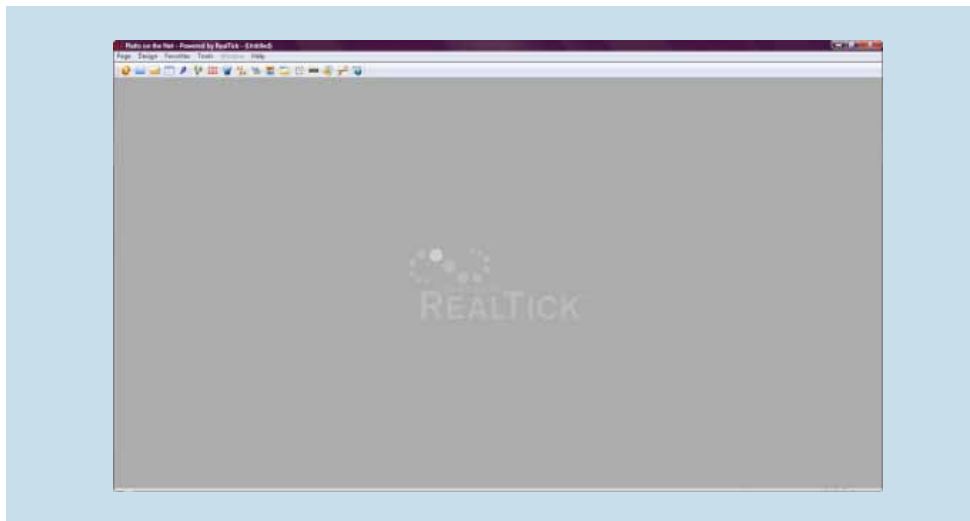
Enter the information and click **OK**. When a connection to the Realtick permissions server is completed, you will be prompted to change to a permanent password. Passwords are case sensitive.

Note: Platts does not have access to your password although we can reset it for you if necessary.

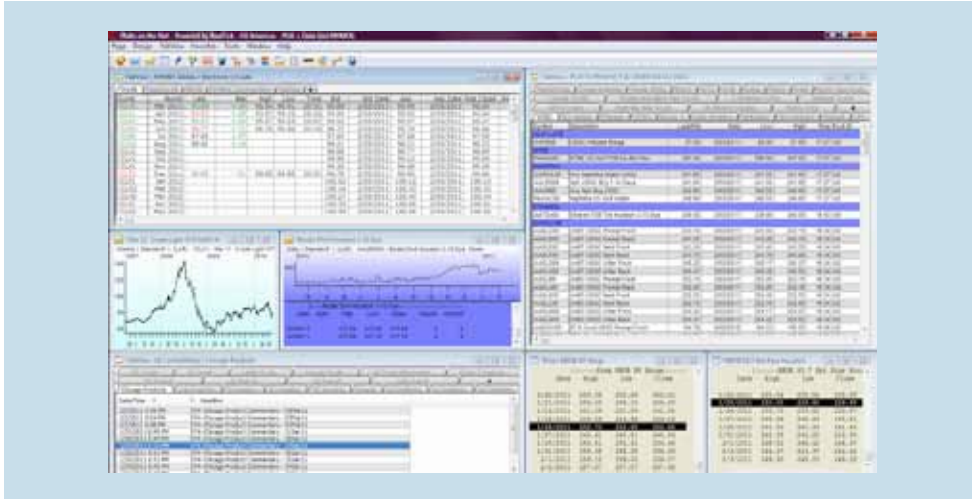


The sign on screen will appear on a gray background. It may take a few minutes to finish the connection the first time.

Once access is complete you will see this very grey screen or a custom page (below).



Custom Desktop / Page:



NOTE: If the program does not access to this point, there may be a connectivity issue with your company's firewalls or security rules. Please download the **Firewall document** from www.platts.com > Subscriber's Support > Software & User Manuals and provide it to your IT Department. Platts Client Service will assist; please contact support@platts.com